

PF WHEEL

BUILT FOR SPEED

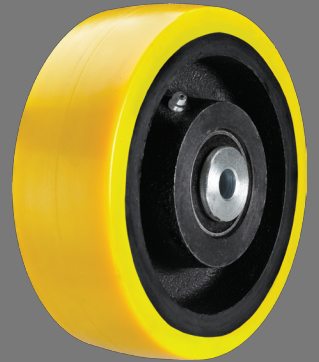
Albion[®] proudly introduces its PF Wheel – Yellow polyurethane on a black core

Polyurethane treaded wheels, firmly bonded to precision machined cast iron cores. Albion PF Wheels are designed to reduce noise problems and offer cushion to loads. The polyurethane material allows the PF wheels more flexibility in rolling over debris and obstacles without picking up objects. They are non-marking, floor protective, and tested against bond failures.

Wheel Bearing Options : Sealed precision ball bearings,
tapered roller bearings

Wheel Hardness: 95A on all sizes

Temperature range: -40° F to 180° F



Specifications

Wheel Dia.	Tread Width	Capacity	Hub Length	Bore ID	Bearing ID	Part No.
6"	2"	2,000 lbs.	2-7/16"	47mm	1/2"	PF0622808
6"	2-1/2"	2,900 lbs.	3"	52mm	3/4"	PF064281201
6"	2-1/2"	2,900 lbs.	3-1/2"	52mm	3/4"	PF0642812
8"	2"	2,200 lbs.	2-7/16"	47mm	1/2"	PF0822808
8"	2-1/2"	3,100 lbs.	3-1/2"	52mm	3/4"	PF0842812
8"	2-1/2"	3,100 lbs.	3"	52mm	3/4"	PF084281201
8"	3"	4,000 lbs.	3-1/2"	62mm	3/4"	PF0852812
10"	2-1/2"	3,300 lbs.	3-1/2"	52mm	3/4"	PF1042812
10"	2-1/2"	3,300 lbs.	3"	52mm	3/4"	PF104281201
10"	3"	4,200 lbs.	3-1/2"	62mm	3/4"	PF1052812
12"	3"	4,400 lbs.	3-1/2"	62mm	3/4"	PF1252812
10"	5"	8,000 lbs.	5-1/2"	2-7/16"	1-1/4"	PF1280920
12"	5"	10,000 lbs.	5-1/2"	2-7/16"	1-1/4"	PF1280920
16"	5"	10,500 lbs.	5-1/2"	2-7/16"	1-1/4"	PF1680920

For more information, visit us at
www.albioninc.com